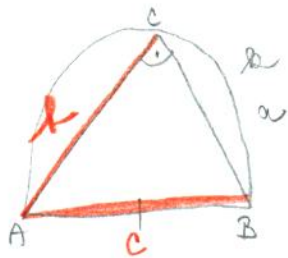
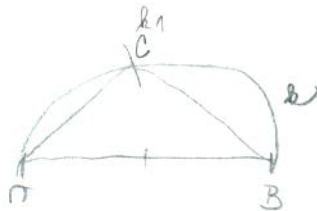


c) $\gamma = 90^\circ, c, k$

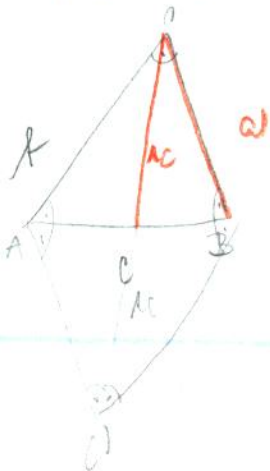


$(k \neq A, k = k)$



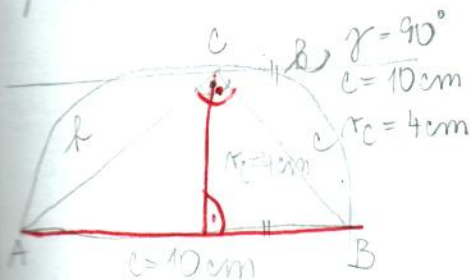
d) $\gamma = 90^\circ, a, k$

$AC \perp BC$ ana.



A)

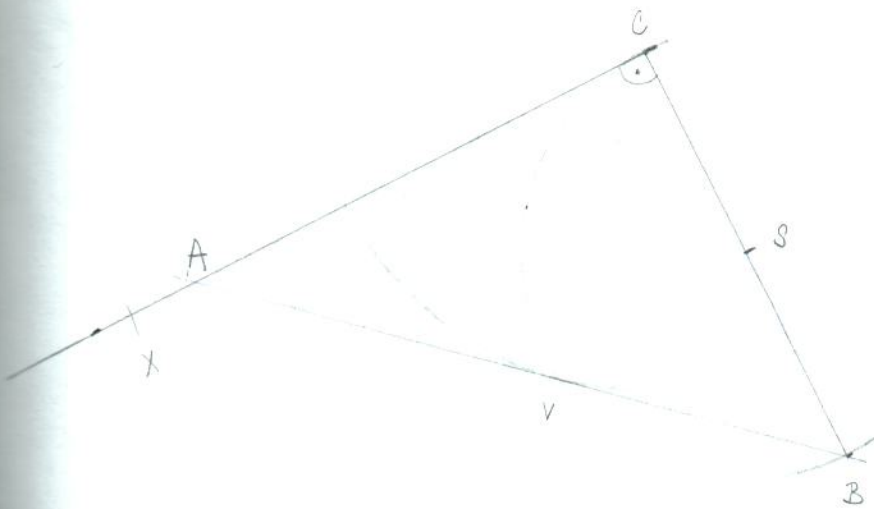
1) ma'ot



2) Postup:

- 1) AB; $|AB| = 10 \text{ cm}$
- 2) S_1 mid \perp to AB
- 3) $k_1; k(S_1, r = SA)$
- 4) $p_1, p \parallel AB; |pAB| = 4 \text{ cm}$
- 5) $C \in k \cap p$
- 6) $2\Delta ABC$

3) Konstrukce:



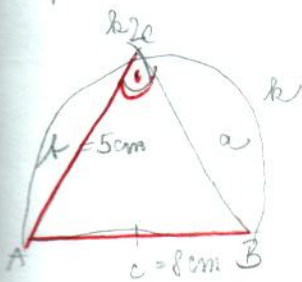
k_2

k

4) zadan: $\triangle ABC$

c)

1) materiál:

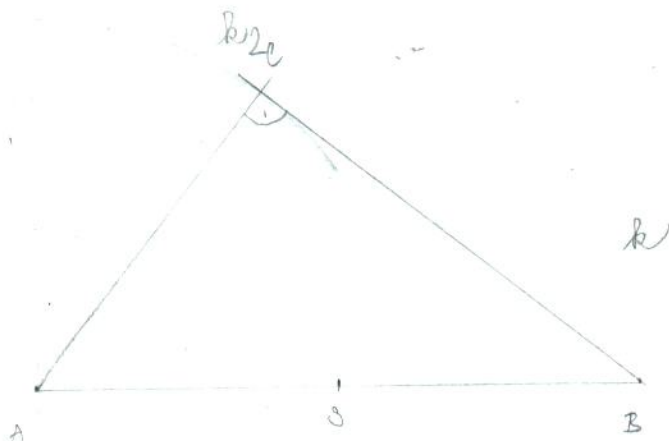


$\gamma = 90^\circ$
 $c = 8\text{cm}$
 $a = 5\text{cm}$

2) Postup:

- 1) AB ; $|AB| = 8\text{cm}$
- 2) S ; střed kolmice AB
- 3) k ; $k(S, r = SA)$
- 4) k_2 ; $k_2(A, r = 5\text{cm})$
- 5) $C \in k \cap k_2$
- 6) $\triangle ABC$

3) Konstrukce:



4) zadan: $\triangle ABC$