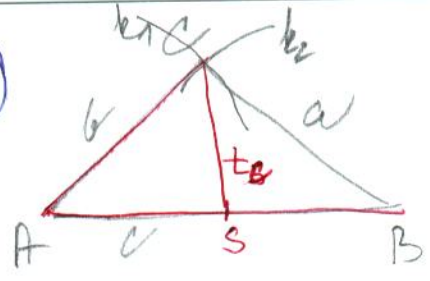
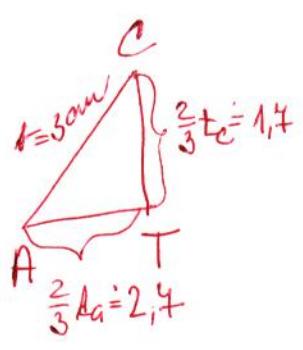
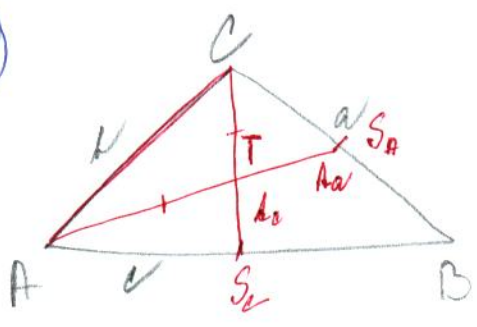


6



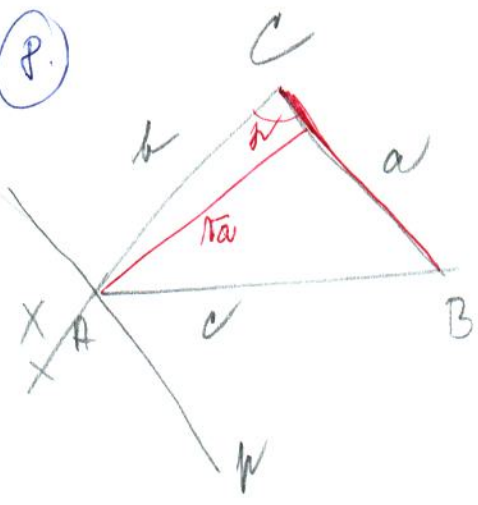
- Poskup: 1.) $c = |AB| = 3,8 \text{ cm}$
 2.) S-plüed AB
 3.) $k_1 (S, \mu = 5,1 = d_c)$
 4.) $k_2 (A, \mu = \nu = 5,1 \text{ cm})$
 5.) $C \in k_1 \cap k_2$
 6.) $\triangle ABC$

4



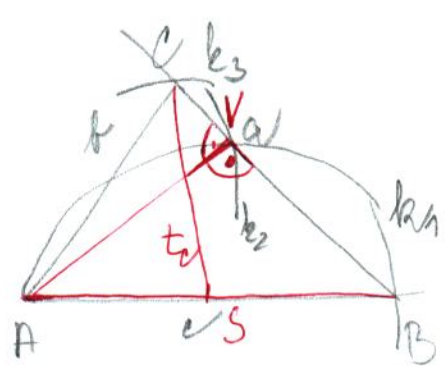
- Poskup: 1.) $\triangle ACT$ (sss)
 2.) $S_A; S_A \in \tau \rightarrow AT; |AS_A| = 4 \text{ cm}$
 3.) $S_C; S_C \in \tau \rightarrow CT; |CS_C| = 2,5 \text{ cm}$
 4.) $B \in \tau \rightarrow AS_C \cap CS_A$
 5.) $\triangle ABC$

8



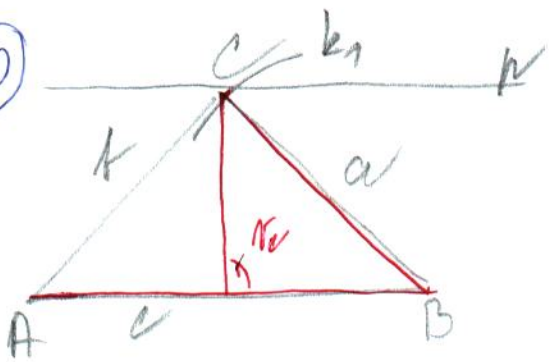
- Poskup: 1.) $a = |CB| = 10 \text{ cm}$
 2.) $\mu; \mu \perp \tau; |\mu a| = 5,5 \text{ cm}$
 3.) $\nu = \angle BCX$
 4.) $A \in \mu \cap \tau \rightarrow CX$
 5.) $\triangle ABC$

9



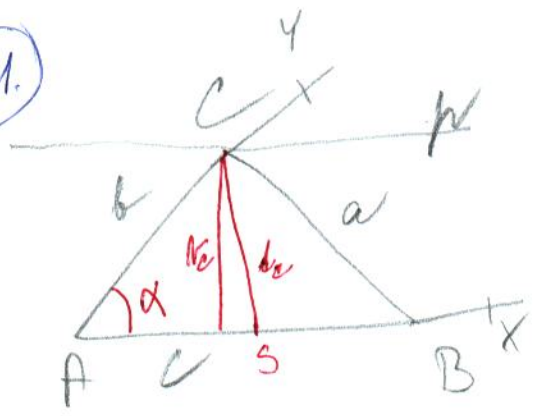
- Poskup: 1.) $c = |AB| = 9 \text{ cm}$
 2.) S-plüed AB
 3.) $k_1 (S; \mu = |SA| = |SB|)$ Thales. ker.
 4.) $k_2 (A; \mu = \mu_a = 4,5 \text{ cm})$
 5.) $k_3 (S; \mu = d_c = 6,5 \text{ cm})$
 6.) $C \in k$
 5.) $V \in k_1 \cap k_2$
 6.) $k_3 (S; \mu = d_c = 6,5 \text{ cm})$
 4.) $C \in k_3 \cap \tau \rightarrow BV$

10



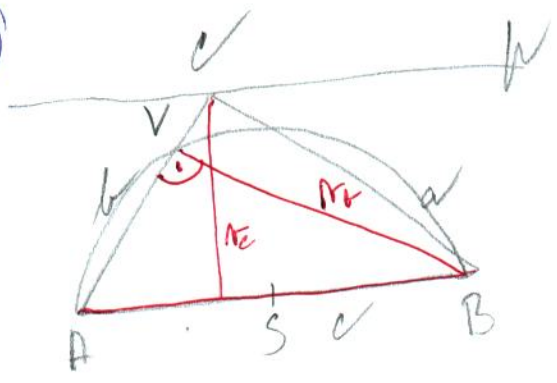
- Postup: 1) $c = |AB| = 8\text{cm}$
 2) $p \parallel k$; $|p, k| = r = 3,5\text{cm}$
 3) $k_1 (B; r = a = 5\text{cm})$
 4) $C \in p \cap k_1$
 5) $\triangle ABC$

11



- Postup: 1) $\alpha = |\angle XAY| = 45^\circ$
 2) $p \parallel AX$; $|p, AX| = r = 6\text{cm}$
 3) $C \in p \cap AY$
 4) $k_1 (C; r = r_c = 6,5\text{cm})$
 5) $S \in k_1 \cap AX$
 6) $B; B \in AX; |AB| = 2 \cdot |AS|$
 7) $\triangle ABC$

12



- Postup: 1) $c = |AB| = 4\text{cm}$
 2) s - place AB
 3) $k_1 (S; r = |SA| = |SB|)$ - Thal. kel.
 4) $k_2 (B; r = r_b = 6,5\text{cm})$
 5) $V \in k_1 \cap k_2$
 6) $p \parallel AB$; $|p, AB| = r = 5\text{cm}$
 7) $C \in p \cap AV$
 8) $\triangle ABC$